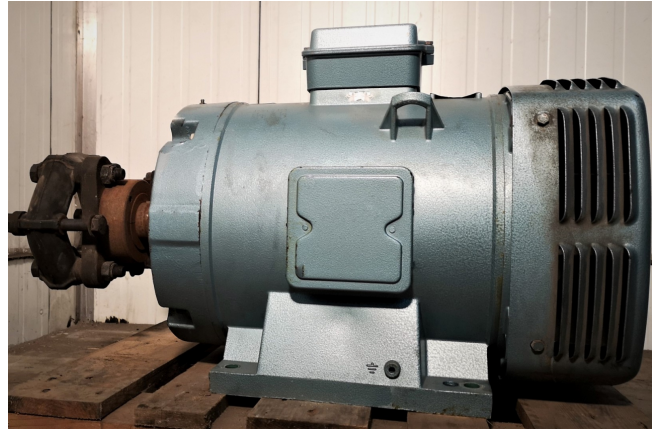


Leroy Somer P225 M-4

Specifications

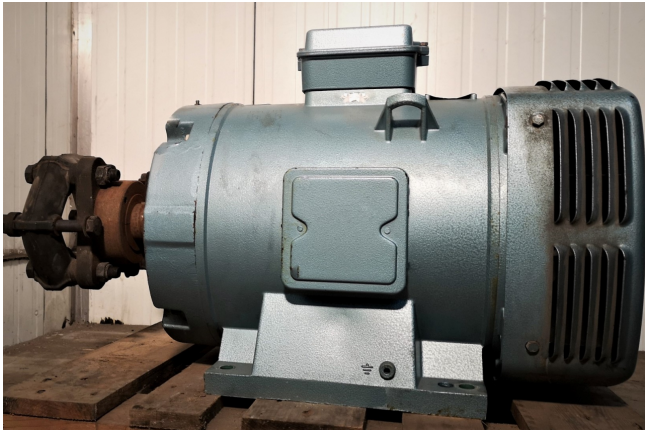
Merk	Leroy Somer
Type	P225 M-4
kW	55
RPM	1460
Size & Weight	910x380x530 mm (LxWxH)
50 Hz / 60 Hz	50 Hz
Stock	2



Description

Used Leroy Somer P225 M-4

Gebruikte Leroy Somer P225 M-4 elektromotor met 55 kW en 1460 RPM bij 50 Hz. Maten: 910x380x530 mm (LxBxH). Gewicht 240 kg.



MOT ASYN		03/1991	
N°	4784 / 07	IP	233 50 Hz 3 p z
TYP	P 225 h-4	V	A380
Kw	55	A	109
RPM	1460	Id/in	5.1
S	S1	Cd/Cn	2.3
CL	F M 240 kg	m	Cos ϕ .84
°C	40 Alt	dBA	η 91.5
J rot	kg/m ²		
CA DE	5314 03	ESSO	3800 h
CDA	5214 03	UNIREX N.3	30 g
NDE		GRAISSE/GREASE	
bea. lag Roulements		NFC 5111.79 CEI 34.1	
PRESTIBLOC			
16015 Angoulême FRANCE			
MOTEURS LEROY - SOMER			